

**> DERBY  
COMMUNITY  
SAFETY  
STRATEGY  
2005 – 2008**





# Contents

## Foreword

Ray Cowlshaw, Chair of Derby Community Safety Partnership 5

1

## Introduction

Building Safer and Stronger Communities 6

Case Study 7

Setting the Context 8

Achievements 2002 – 2005 9

2

## From Audit to Strategy

The Findings of the 2004 – 2005 Audit 12

Setting the Strategic Priorities 15

Joint Priorities and Hotspot Areas 16

3

## Strategic Priorities – In Depth

1. Building Stronger and Safer Communities 18

2. Prevention and Reduction of Anti-Social Behaviour 20

3. Prevention and Reduction of Drug and Alcohol Misuse 22

4. Prevention and Reduction of Youth Crime 24

5. Prevention and Reduction of Crime 26

4

## Supporting the Strategy

Board and Sub Groups 28

Staff 29

Commissioning and Performance Management 31

Budget 32

Consultation, Marketing and Communications 33

5

## Delivering on Your Behalf

Links to other Strategies 34



# Foreword

Whenever we consult with local people, they raise fear of crime, anti-social behaviour and drug misuse as key concerns for themselves, their families and friends, as well as their local communities.

In Derby, we have responded to these fears by establishing Derby Community Safety Partnership. By setting up this Partnership, local agencies, including the Police, Derby City Council and the Primary Care Trusts, have pooled resources and expertise in order to tackle the factors that lead to crime, disorder and drug misuse. This is not an easy challenge but it is one that we have taken seriously in Derby.

This document outlines our strategy for tackling these issues over the next three years. Derby Community Safety Partnership has already been recognised, at both regional and national levels, as an excellent example of partnership working. This report also outlines a wide range of achievements by the Partnership. I am confident that we will build on these achievements through 2005 to 2008, and will continue to work toward improving the quality of life in our local communities.

**Ray Cowlshaw**  
**Chair – Derby Community Safety Partnership**

# Introduction

## > Derby Community Safety Partnership

### Building Safer and Stronger Communities in Derby

The overall purpose of Derby Community Safety Partnership is to make sure that people living, visiting and working in Derby feel safe and confident in their daily lives and enjoy, in full, the quality of life that the city offers.

This Strategy outlines the priorities, aims and objectives of Derby Community Safety Partnership for the next three years, 2005 to 2008. It sets out a clear plan, against which the success of the work of the Partnership will be judged.

Chapter 4 outlines the resources of the Partnership, in terms of people, finances and performance. Chapter 5 explains that, in achieving this strategy, Derby Community Safety Partnership is working on behalf of both local people and a number of organisations. The Partnership is also delivering on behalf of the Community Strategy for Derby City Partnership.

This Strategy is fundamentally about real people living in real communities. It sets out a clear plan based on an extensive audit of crime, disorder, drug misuse and local fears about crime and community safety in Derby. Strategies only make a difference, however, if they are implemented, and I would like to conclude this introduction with an example of how we can all make a difference.

**“Derby Community Safety Partnership aims to make sure that people living, visiting and working in Derby feel safe and confident in their daily lives and enjoy, in full, the quality of life that the city offers.”**



## > Case Study – The Austin Estate Area

The previous Home Secretary visited this estate in November 2004 because he was extremely impressed by reports he had received on the work that was taking place there. During his visit, local people told him the story of their estate. I was also at this meeting, and regard the Austin Estate as one of the best examples of the work of Derby Community Safety Partnership.

The story is a familiar one. Local people were too afraid to go out of their homes at night, or sometimes during the day. Some had neighbours that they found frightening. Groups of local young people were seen to be intimidating, particularly outside local shops. There were real concerns about increased use of drugs and ‘gangs’ associated with drug dealing. The general environment was depressing; graffiti, damage to buildings and small deliberate fires all combined to make people feel that their community was out of control.

The crime figures confirmed that there was a problem in the area. Recorded crimes of burglary, violence and criminal damage were higher than most other areas of the city. The Police were also aware that many crimes were not being reported.

In April 2004 Derby Police applied for national funding for the Austin Estate to become a ‘Priority Area’. Funding was granted and the Police, working with Derby Community Safety Partnership and Derby City Council, initiated the Community Safety Priority Area Project. An audit was undertaken, where 100 local people were interviewed to identify the key concerns in

the Austin Estate area. Residents were invited to join an Austin Estate Community Safety Action Team, and set about agreeing an Action Plan to improve the area. Environmental improvements were made, the community centre re-opened its youth club, the Police targeted the prolific and most aggressive offenders and, most importantly, a group of twelve local residents put themselves forward to act as Community Champions. They now work with the Project Officer, who is based on the estate, to support local people in identifying and resolving local problems.

The results are impressive. Crime data shows a 12% decrease in crime overall in the area, with significant reductions in burglary and violent crime. Local people describe feeling safer and more confident in their community. Local young people have also signed up to become community champions and 100 people have joined the Neighbourhood Watch scheme.

We recognise that there is still work to be done and a second audit will take place in July 2005 to set another year’s Action Plan.

The Community Safety Priority Area Project certainly shows us that by working together – in partnership – local people and local agencies can make a difference.

**Sharon Squires**  
**Director of Derby Community Safety**  
**Partnership**

**“Derby is a young, vibrant, multicultural and contemporary city, which is undergoing substantial regeneration, particularly through the Riverlights and Cityscape projects.”**



## > Derby

### Setting the Context

The area covered by Derby Community Safety Partnership corresponds with that covered by Derby City Council, which is a unitary authority. Derby is an urban area, covering approximately 30 square miles. It is also the UK’s most central city and is located in the East Midlands, along with the cities of Nottingham and Leicester.

Derby is a young, vibrant, multicultural and contemporary city, which continues to undergo substantial regeneration with schemes such as Riverlights and Cityscape. Derby also has a long industrial history as shown by the recognition of the Derwent Valley Mills as a World Heritage Site. Derby is still recognised as a regional centre of engineering and manufacturing excellence with famous names such as Rolls-Royce, Bombardier, Royal Crown Derby, Acordis and, more recently, Toyota and Egg.

Derby has a population of over 233,000, 51% of whom are female and 84% are White British (ONS, Census 2001). The city has a higher than average Asian community with 8.4% of the population being Asian or Asian British, while nationally the figure is 4.6%. Derby is a multi-cultural city, which has seen the recent building of a Multi-Faith Centre, a registered charity based at the University of Derby.

Derby has a young population, with an average age of 37.9 years, compared with 38.6 years for England and Wales. It also has a higher than average student population, reflecting the fact that Derby is a university city.

The city comprises 17 wards, including Arboretum ward, which includes the city centre. The 2004 Index of Multiple Deprivation indicates that there are pockets of extreme deprivation within the city.

Derby’s city centre<sup>1</sup> is compact and largely pedestrianised. It only covers around 1.4% of the city’s geographical area but includes almost a quarter of Derby’s businesses, 31% of the city’s licensed premises and 38% of the city’s restaurants.

The £275 million Cityscape development scheme is in the process of re-developing the city centre as a vibrant hub that will be the focus for community, cultural, retail, business, civic and leisure activities.

<sup>1</sup> As defined by 600m radius of the Cornmarket / St Peter’s Street junction C435279, 336150

## > Derby Community Safety Partnership

Achievements 2002 – 2005

### The Legal Background

In 1998, the Government passed the Crime and Disorder Act, which placed a statutory obligation on local authorities and the Police to work in partnership with other agencies to develop and implement a strategy for tackling crime and disorder in their area.

In 2002, the Police Reform Act amended the Crime and Disorder Act and specified that responsible authorities should include the Police Authority, Fire and Rescue Service and Primary Care Trusts, and that local strategies should also address drug misuse.

Before formulating a strategy, the responsible authorities were required to carry out an audit of local crime, disorder and drug misuse, publish that audit for consultation and then respond to the views of consultees.

### The First Strategy

The first crime and disorder strategy for Derby was published in 2002 by the Crime and Disorder Reduction Partnership, following the completion of the audit process during 2001 – 2002. At that point the reduction in drug misuse strategy for the city was separate and approved on an annual basis by the Drug and Alcohol Action Team. The Youth Offending Service was established in 1999, and published its first three-year strategy in 2002. Derby Domestic Violence Partnership also had a separate three-year strategy for 2002 – 2005, approved by the Domestic Violence Forum.

### Establishment of Derby Community Safety Partnership

In 2003 the four partnerships mentioned were merged into Derby Community Safety Partnership – DCSP. A new Board was established, a Director for the DCSP was appointed and a review of plans and activity completed in time for the preparation of this strategy (2005 – 2008), which brings together the crime, drugs, anti-social behaviour, domestic violence and youth crime agendas.

### Key Achievements

It is clear, however, that the four separate partnerships were very effective and that Derby looks very different in 2005 than it did in 2002. Key achievements since 2002 are:

#### ■ Reduction of Crime

Crime in Derby has fallen by 6% between 2002 and 2004, from a rate 10% higher than the CDRP family average to around 5.5% below the family average in December 2004.

The most significant decrease has been in domestic burglary. The Partnership established the Burglary Reduction Team (BRT) in 2002. The BRT has focused on proactive target hardening activity and environmental crime reduction initiatives in the two neighbourhoods with the highest domestic burglary concentration –

**“The results are impressive. Crime data shows a 6% decrease in crime overall in the city, with significant reductions in burglary and vehicle crime. Local people describe feeling safer and more confident in their community.”**

**“The dedicated domestic violence court in Derby was one of the first of its kind in the country.”**

**“The Anti-Social Behaviour Team played a central role in serving 19 successful ASBOs, 87 Acceptable Behaviour Contracts, and solving 85 individual community-based problems.”**

Normanton and Derwent. Domestic burglary fell by 23% between 2002 and 2004, with repeat victimisation falling by 22%. Repeat victimisation in the Derwent focus area fell by around 33% during the same period.

Vehicle crime also fell by 20% between 2002 and 2004, having been impacted by a major programme of improvement and security works in one of the city’s main problem car parks. The Partnership, Police and Derby City Council have also carried out major publicity and public awareness raising campaigns during peak periods for vehicle crime.

Domestic violence remains a largely hidden problem in Derby. The Domestic Violence Partnership has made efforts to increase confidence in reporting incidents to Police and other agencies, through targeted work with outreach and refuge services and high profile media and publicity campaigns. The level of domestic violence reported to the police increased by 40% between 2002 and 2004 and the dedicated domestic violence court, one of the first of its kind in the country, deals with around 50 cases per month.

#### ■ **Reduction of Anti-Social Behaviour**

Derby Anti-Social Behaviour Team is one of the national ‘Together’ areas, working closely with the Anti-Social Behaviour Unit at the Home Office to identify and reduce levels of anti-social behaviour across the city.

Since 2002, the Partnership’s Anti-Social Behaviour Team has been responding to community and neighbourhood-based anti-social behaviour by adopting a problem solving approach to priority issues. The team has played a central role in serving 19 successful Anti-Social Behaviour Orders, 87 successful Acceptable Behaviour Contracts and solving 85 individual community-based problems.

#### ■ **Drug and Alcohol Misuse**

Over the last two years, Derby’s Drug and Alcohol Action Team has continued to ensure that agencies across the city work together to reduce the harm that drugs cause society. The number of people in treatment has increased substantially since 2003. 685 people had been in drug treatment at some stage during 2003 – 2004, whilst in the first six months of 2004 – 2005, 746 were treated, an increase of 9% in just the first half of the year. The drug treatment workforce has expanded to the equivalent of 62 full time staff and the number of GPs prescribing for drug treatment has also increased.

The dedicated Drug Interventions Team, set up in the beginning of 2004, has concentrated on getting drug-using offenders into treatment, with 215 people entering drug treatment via the criminal justice system between April and December 2004.

The service for young people with substance misuse problems is very effective, working to enhance programmes of drug education in schools and offering help to young people and their families. 78% of all city schools have drug education and incident policies in place.

### ■ Drug Market Mapping

The Drug Market Mapping Project in Derby is seen as a national model of good practice in analysing local drug markets and the impact they have on communities. This allows the DCSP to work with the police to reduce the supply of drugs in Derby.

### ■ Youth Offending

Extensive prevention and intervention work conducted by Derby Youth Offending Service (YOS) has led to continued reductions in the level of robbery, vehicle crime and burglary committed by young people. Derby YOS always surpasses and often doubles the Youth Justice Board targets for the number of young people identified and engaged in preventative support, and has been cited as a good example in the Home Office's five-year strategy, 'Confident Communities and a Secure Britain'.

### ■ Overall Achievements

The Partnership continues to join up and enhance multi-agency activity through the sharing of knowledge and working practices. This is evidenced in the development of media relations and information sharing protocols, the publication of service directories around themes such as domestic violence, Storewatch and Pubwatch initiatives, the Partnership's self-assessment process and multi-agency forums such as the data, research and analysis group.

One of the Partnership's greatest contributions to the reduction of crime, disorder, drug and alcohol misuse and the fear of crime has been to develop a more informed understanding of the problems that exist in Derby. This has been delivered through specific research projects, the community safety audit and the sharing of community safety theories, models and good practice in addressing such problems.

All these examples – and there are many more – demonstrate that by focusing on a problem and working in partnership, we can make a difference. There is a significant amount of expertise, knowledge and commitment in all agencies and communities in Derby, and we can utilise those skills to ensure that Derby remains a place where people enjoy living and experience high levels of safety.

**“Derby Youth Offending Service has been recognised as an example of good practice in the Home Office’s five-year strategy.”**



# From Audit to Strategy

## The Findings of the 2004 – 2005 Audit and Setting Strategic Priorities

### > The Audit Findings 2004 – 2005

The data and information gathered in Derby Community Safety Partnership's Audit were from a wide range of sources. Statistical data was obtained from the police, local authority, registered social landlords, fire and rescue service and many other local agencies. In addition, several pieces of research were carried out in order to add further detail. Research included a survey of 1,085 adults on their perceptions and experiences of crime and disorder.

A similar survey was undertaken with 399 young people, aged under 18. In-depth interviews were carried out with 26 drug misusers in order to understand better the journey into problematic drug use and their experiences of treatment and the criminal justice system. Four focus group sessions were held to address the concerns of particular communities. These included two women's groups, Black and minority ethnic group representatives, and lesbian, gay, bisexual and transgender group representatives. Additionally, as part of the audit consultation process, presentations and discussions were held with older people and representatives from disabled people's groups. This was followed up with a focus group exploring the particular experiences and concerns of disabled people.

#### > Audit Consultation

A wide variety of methods were used to consult on our Audit document. We produced a newsletter outlining the key findings of the Audit, which was distributed as a supplement to a local newspaper and circulated to all households in Derby. Within this was a short questionnaire and we have received 167 completed feedback forms. In addition, an event to present and discuss the Audit was held with residents of Derby and those invited to the previous focus groups. The Audit was also presented at Derby Seniors' Forum and Disabled People's Advisory Committee.

As well as the general public, presentations of the Audit and discussions were held with, amongst others, the Partnership Board; the data analysts' group to help verify the data; the Chief Officer Group of the city council; and the Women's Advisory Group. Further, all Board members and representatives of key local agencies and business groups received a copy of the Audit.

#### > Key Findings

##### ■ Crime

- There has been an overall reduction in crime by 6% since 2002.
- There has been a significant decrease in burglary (down by 23%) and vehicle crime (down by 20%) since 2002, but other crimes, such as criminal damage, have increased by 14%.
- Violent crime remains an area of concern, with increases in domestic violence and city centre violent crime, although the overall statistics on violent crime remain 'static'.
- There is an increase in incidents of 'hate crime' (racial and homophobic crime), but reporting of these crimes is still low.
- It is estimated that the cost of crime in Derby from 2002 – 2005 was £216.8 million.



**“The data and information gathered for the Audit came from a wide range of sources.”**

**“Domestic burglary has reduced by 23% and vehicle crime has fallen by 20% since 2002.”**

- Crime ‘hotspots’ include the city centre and wards of Normanton, Allenton, Derwent, Morley and Sinfin.
- A small group of prolific offenders cause a significant amount of local crime.

#### ■ Anti-Social Behaviour

- The term ‘anti-social behaviour’ (ASB) includes a wide range of ‘behaviours’.
- There are, however, some key problems including prostitution, criminal damage, begging, vandalism, street disorder and neighbour disputes.
- Some communities suffer more from anti-social behaviour than others. The city centre suffers from alcohol related ASB, particularly at weekends. Other vulnerable neighbourhoods are Normanton, Allenton, Austin, Derwent and Old Sinfin.
- ASB severely affects the quality of life for local people, who see it as an indicator that their community has high levels of crime. The Anti-Social Behaviour Team at the Partnership has made a significant impact by working with local people to reduce incidents of anti-social behaviour in local communities.

#### ■ Drug Misuse

- Research indicates that Derby has 3,500 ‘problematic drug misusers’.
- Heroin and crack are the main drugs causing problems.
- It is estimated that it costs at least £12,000 per year to sustain a drug habit.
- There is a clear relationship between drug use and committing crime, in particular crimes of shoplifting, burglary and prostitution.
- The local ‘drug market’ is worth approximately £38 million for heroin and £14-29 million for crack.
- People take drugs for a range of reasons including individual problems, stressful life events and pressure from friends/peers.
- 700 drug users are currently in treatment.

#### ■ Young People and Crime

- Young people under 18 are convicted for just 12% of local crime.
- They mainly commit offences of assault, shoplifting and criminal damage.
- There are a number of factors that make young people vulnerable to offending. Use of alcohol and drugs, not attending school, family difficulties/being in the care of the local authority and emotional health problems are important.
- Derby Youth Offending Service has been successful in both preventing young people from committing crime and anti-social behaviour (in those areas where there are prevention programmes) and also reducing the likelihood of young offenders re-offending.
- Young people are more likely to be a victim of crime than adults, although much is unreported. Young people have high levels of fear of becoming a victim of violent assault.

**“The Anti-Social Behaviour Team has made a significant impact by working with residents to reduce ASB in local communities.”**

**“Young people under 18 are convicted for just 12% of local crime.”**

**“Most residents think that both the area where they live and Derby as a whole are better than other areas in relation to crime, anti-social behaviour and drug misuse.”**

### ■ Local People’s Fears and Perceptions

Our survey, which was based on face-to-face interviews, tells us that:

- Adults most fear
  - burglary at their home
  - young people hanging around
  - speeding traffic
  - theft from garden/shed
  - damage/theft of car.
- Young people most fear
  - being mugged
  - physical assault
  - sexual assault
  - having car vandalised
  - other young people.
- Both adults and young people do not report all crime and anti-social behaviour. Reasons given were fear of reprisals and police not taking action.
- People’s level of fear/worry impacts significantly on their behaviour and quality of life, for example going out in the dark, not going to certain locations. Public spaces such as parks, the city centre, and shopping centres are seen as particularly threatening.

### ■ Good News

- Our survey told us that most residents perceive Derby as a safe city. 75% of residents view their neighbourhood as a very good place to live and most people thought both their area and Derby are better than other areas in relation to crime, anti-social behaviour and drug use.
- 77% of local people felt their neighbourhood was a place where different ethnic groups get on well together.

For a full copy of the Audit please telephone 01332 256160. You can also download a copy at [www.saferderby.org](http://www.saferderby.org)

## > Setting the Strategic Priorities for 2005 – 2008

The Audit tells us that there is still much to do in reducing crime, disorder and drug misuse in Derby. Of particular concern is violent crime, most significantly incidents of assault in the city centre (mainly alcohol related) and incidents of domestic violence. Burglary and criminal damage also need further reductions, and we will continue to reduce the incidents of motor vehicle theft or damage.

There is a clear relationship between drug misuse and crime, and the challenge of reducing drug misuse is significant. The Audit also confirms that there is a small group of persistent offenders who cause significant harm to our communities.

In addition, the Audit tells us that levels of fear and concern about crime, drugs and anti-social behaviour are high. Disproportionate fear of crime has a significant impact on people's quality of life. Adults remain particularly fearful of burglary and damage to their property or car. Young people hold high levels fear of becoming a victim of violent assault.

The task of Derby Community Safety Partnership for 2005 – 2008 is to continue to reduce crime, disorder and drug misuse across the city. However, we also need to reassure local people, making sure that they continue to take the necessary precautions for their own safety, but also reducing disproportionate levels of fear so that it does not affect an individual's, or the community's, quality of life. This is particularly relevant to young people, who indicate high levels of fear in both public spaces and at school.

Following the Audit findings, Derby Community Safety Partnership has set five strategic priorities for 2005 – 2008. These are:

- 1 Building stronger and safer communities** to ensure local people are fully involved in defining and resolving local community safety problems, and help the Partnership to reduce levels of disproportionate fear of crime, anti-social behaviour or drug misuse in their areas. The Partnership will work with other agencies to tackle the causes of crime in more vulnerable neighbourhoods.
- 2 Reducing levels of anti-social behaviour** such as criminal damage, deliberate fires, graffiti, abandoned vehicles and intimidation by groups of young people. Tackling low-level crime and anti-social behaviour reassures people that action which contributes to making their community safer *will* be taken.
- 3 Preventing and reducing the harm caused to individuals, families and communities by drugs and alcohol.** Misuse of drugs causes enormous harm to individuals, families and communities. There is a clear relationship between problematic drug misuse and crime. It costs at least £12,000 a year to sustain a heroin habit and crime is one way of raising money. Of more significance is the impact of drug markets on local communities and the city. Establishing and protecting drug markets can lead to violence, gun crime and gangs. The provision of effective and accessible drug treatment services is essential, including the implementation of treatment services for offenders. We also need continued activity directed at reducing drug markets, such as the closure of 'crack houses'.



**“The task for the Partnership is to continue to reduce crime, disorder and drug misuse in the city.”**

## The five strategic priorities:

- 1 *Build stronger and safer communities*
- 2 *Reduce anti-social behaviour*
- 3 *Reduce harm caused by drugs and alcohol misuse*
- 4 *Prevent and reduce youth crime*
- 5 *Prevent and reduce adult crime.*

**4 Preventing and reducing youth crime.** In those areas where there are youth crime prevention programmes, levels of crime have reduced significantly. Preventing young people from offending is a key priority for Derby Community Safety Partnership. This involves working with education, health and other agencies to make sure that children and young people are able to achieve their full potential, and contribute positively to their community. Young people are more likely to be victims of crime than adults and have higher levels of fear. Creating a safe city for young people is therefore an important challenge.

**5 Preventing and reducing adult crime.** Reducing violent crime is our top priority for 2005 – 2008, with a particular focus on domestic violence, city centre violence and hate crime.

Domestic violence is estimated to represent 44% of all assaults in the city, and is increasing. Derby Community Safety Partnership will continue to take domestic violence seriously and work with the Police and other agencies to ensure that perpetrators are charged and convicted and that victims are supported effectively.

City centre violent crime cannot be addressed without examining the impact of binge drinking. Derby Community Safety Partnership will work with Derby City Council and the Police to ensure that there is a culture of responsible drinking in Derby and that licensees conduct their trade in a responsible manner.

Hate crime, where people are attacked because of their religion, race, sexuality or ethnicity is an under reported but growing area of concern for the Partnership. We will work with local communities and agencies to ensure that such crimes are prevented and reduced.

Other priority crimes are the continued reduction of domestic burglary, particularly in those neighbourhoods that suffer from disproportionate levels of burglary, and the reduction of vehicle crime, crimes against local businesses and theft.

More detailed information about each of these priorities can be found from page 18 onwards.

There are some matters that have been identified as cross cutting issues and will involve joint work across the sections in Derby Community Safety Partnership.

## > Joint Priorities and Hotspot Areas

### > Prolific and Other Priority Offenders

Derby Community Safety Partnership's Audit tells us that a small number of offenders commit a significant amount of crime in Derby. Many of those offenders will have drug misuse (heroin/crack) problems. They will often be in unstable accommodation and/or homeless. They are unlikely to be in employment and would not necessarily be employable.

Derby Community Safety Partnership has established, in partnership with Derby Police, Derbyshire Probation Service and Derby City Council, a prolific and other priority offenders (PPO) scheme. This scheme, which will be developed during 2005 – 2008, will be the focus of multi-agency work and the implementation of the national PPO strategy. It aims to prevent and reduce offending which is committed by this small group of individuals in order to make Derby a safer city.

### ➤ Vulnerable Communities

Derby Community Safety Partnership defines communities in two ways:

- neighbourhoods – *that is, geographically defined areas, and*
- communities of interest – *such as groups of people who share a belief or lifestyle.*

The Audit has defined some neighbourhoods that suffer disproportionately from levels of crime, anti-social behaviour and drug misuse. These communities also experience, not surprisingly, high levels of fear. Six neighbourhoods stand out in the Audit. These are:

- City Centre
- Normanton
- Allenton
- Derwent
- Sinfen
- Morley.

Derby Community Safety Partnership will focus on these neighbourhoods with the aim of ‘narrowing the gap’ by reducing levels of crime, anti-social behaviour and fear of crime during 2005 – 2008.

### ➤ Vulnerable Groups – Supporting Victims and Witnesses

Supporting victims and witnesses is a key cross-cutting issue for Derby Community Safety Partnership. Each section of the Partnership undertakes this task as a priority, and examples of good practice include the:

- Youth Offending Service Restorative Justice Scheme, which supports victims of youth crime
- Domestic Violence Unit Court Advocacy Project, which supports victims/survivors of domestic violence
- Burglary reduction work with vulnerable communities and victims of burglary
- Anti-Social Behaviour Team’s problem-solving activity, which is based on diary sheets and action plans, developed by victims of anti-social behaviour.

Derby Community Safety Partnership has recently reconvened the Racial Harassment Partnership for Derby and also co-ordinates responses to incidents of community tensions across the city. Vulnerable groups of people and individuals will continue to be supported by the Partnership which will continue to develop and enhance this area of work throughout 2005 – 2008.

“The Partnership defines communities in two ways – neighbourhoods and communities of interest.”

“Derby Community Safety Partnership will support vulnerable communities.”

## > Strategic Priority 1

### Building Stronger and Safer Communities

#### > Aim

To achieve communities that are strong and inclusive that:

- have a common vision about how they want their neighbourhood to be
- value diversity
- are confident and engaged in working with agencies to tackle local anti-social behaviour, drug misuse and crime.

#### > Objectives 2005 – 2008

1. To form effective partnerships with local people that empower them to identify and resolve local community safety problems as well as their causes.
2. To reduce the disproportionate fear of crime across the city, targeting those areas where levels of fear are significantly higher than the city average.
3. To provide effective interventions to those communities that suffer disproportionately from crime, anti-social behaviour or drug misuse in order to narrow the inequalities between communities in Derby.
4. To ensure equality of outcome in the delivery of services provided or commissioned by Derby Community Safety Partnership.
5. To build trust and understanding between communities and reduce community tensions.

#### > Delivery of these Objectives

Implementation of these objectives will be monitored by the Community Engagement Steering Group, which is chaired by the Director of Derby Community Safety Partnership. Each objective will have a Project Coordinator who will report to the Steering Group and ensure delivery of actions. A Partnership Projects Manager will undertake supervision of the Project Officers for each objective.



**“Derby Community Safety Partnership will form effective partnerships with local people to identify and resolve local problems and their causes.”**

## ➤ Key Actions 2005 – 2008

- A community engagement project between the Partnership, Police and Derby City Council is already underway, with the establishment of Neighbourhood Safety Panels and a Community Safety Team in the Area Panel 2/Merrill Police Section. Further implementation of this model will take place over the next three years to ensure citywide coverage. The Neighbourhood Safety Panels will develop and deliver local action plans, working with residents, the Partnership and beat officers, to identify and solve neighbourhood problems of crime, disorder and drug misuse.
- Derby Community Safety Partnership is lead agency for the Partnership target on reducing the fear of crime, disorder and drug misuse. A project team has been established for this target and a project coordinator will be appointed. This team will develop and implement the three-year reduction in fear of crime programme.
- The Audit identified five key wards as suffering from higher levels of crime, disorder and drug misuse. These wards are Normanton, Allenton, Derwent, Morley and Sinfin. The Community Engagement Project will ensure that Neighbourhood Safety Plans are developed and implemented for each of these wards in 2005, in partnership with local residents, local leaders and other agencies.
- A three-year action plan aimed at ensuring equality of impact and community cohesion is currently under development. This is initially targeted at the Normanton area, where the majority of community tensions occur. The Partnership will, however, continue to monitor equality outcomes and incidents of community tensions, and respond appropriately to any key findings.

**“Neighbourhood Safety Panels will develop and deliver local action plans, working alongside residents, Derby Community Safety Partnership, beat officers and Derby City Council.”**

**“ Tackling anti-social behaviour is fundamental to creating safe, sustainable, active and prosperous communities.”**

## **> Strategic Priority 2**

Reducing Incidents of Anti-Social Behaviour Across the City by 20%

### **> Aim**

Derby Community Safety Partnership is committed to tackling and reducing anti-social behaviour – ASB. Tackling ASB is fundamental to creating safe, sustainable, active and prosperous communities. ASB in all its forms undermines and weakens communities and has a disproportionate impact on our more vulnerable neighbourhoods. In the Partnership’s Audit (2004 – 2005) communities have consistently identified ASB as a major concern and one that significantly contributes to the high levels of fear of crime. The Partnership defines ASB as behaviour that:

- is capable of causing nuisance and annoyance
- causes alarm, harassment and distress
- creates significant and persistent problems in neighbourhoods
- leaves communities intimidated and afraid.

### **> Objectives 2005 – 2008**

1. Reduce distress caused by nuisance neighbours.
2. Reduce incidents of criminal damage, with a focus on deliberate secondary fires and damage to domestic property.
3. Reduce street anti-social behaviour.
4. Reduce environmental and public space crime and disorder.
5. Prevention of anti-social behaviour committed by young people.
6. Target serious and persistent adult offenders by enforcement.
7. Support victims and witnesses.

### **> Delivery of these Objectives**

The Partnership’s Anti-Social Behaviour Team is responsible for delivering these objectives. The team meets with key partners, including the Police and Derby Homes, on a monthly basis to identify and action plan in relation to the 50 most significant problems across the city. Problems are removed from the list once the action plan has been implemented and the issue resolved. Meetings are chaired by the Head of Anti-Social Behaviour and the ASB Action Area Coordinator undertakes monitoring of progress.

## ➤ Key Actions 2005 – 2008

- A Nuisance Neighbour Panel has recently been established in Derby. This meets on a monthly basis to identify and take action against persistent nuisance neighbours, including consideration of ASBOs and tenancy enforcement.
- A specific project is under development with Derbyshire Fire and Rescue Service, with the aim of reducing arson and deliberate secondary fires. This project will consider addressing criminal damage to property.
- A city centre project team will be established, which will focus on the reduction of begging, prostitution and alcohol related street disorder in the city centre.
- A project team has been established to reduce the problems caused by street prostitution across the city.
- Environmental improvements will focus on removal of abandoned vehicles, tackling graffiti and reducing excessive noise.
- Prevention of youth-linked anti-social behaviour will be addressed through the youth crime prevention strategy, and through working with the Youth Offending Service. Prolific perpetrators of anti-social behaviour are included in the Derby prolific and other priority offenders (PPO) scheme.
- Support for victims and witnesses will be delivered through the community engagement project and the use of problem solving methodology.
- The Anti-Social Behaviour Team will continue to work with partners, in particular Derby Police, Derby Homes and Derby City Council, to resolve individual problems of anti-social behaviour, including the use of ASBOs.



**“A Nuisance  
Neighbour  
Panel has been  
established in  
Derby.”**

**“The Anti-Social  
Behaviour Team  
will continue to  
work with partners  
and use ASBOs to  
tackle anti-social  
behaviour.”**

**“Misuse of drugs and alcohol causes enormous harm to individuals, families and communities... The delivery of an effective drug and alcohol strategy is one of the top priorities for the Partnership.”**

## **> Strategic Priority 3**

### **Reduction of Harm Caused to Individuals and Communities by Drug and Alcohol Misuse**

Misuse of drugs and alcohol can cause enormous harm to individuals, families and communities. Problematic drug misuse can lead to unemployment, homelessness and major health problems and problematic drug users will often commit crime to sustain their habit, which will often cost at least £12,000 a year.

There is a clear relationship between drug misuse and acquisitive crime – burglary and theft in particular.

Alcohol misuse can have the same effect on community safety as drug misuse. There is, however, a difference in that alcohol misuse often leads to crimes of violence, such as assaults in the city centre and domestic violence.

The following section outlines what the Partnership aims to do in order to reduce both drug and alcohol misuse in the city.

#### **> Aim**

Prevent people in Derby from causing harm to themselves and others through the misuse of drugs and alcohol.

#### **> Objectives 2005 – 2008**

1. Prevent young people from becoming problematic drug or alcohol users.
2. Reduce the supply of illegal drugs in Derby.
3. Reduce drug-related crime and its impact on communities.
4. Provide effective treatment and harm minimisation programmes for drug users.
5. Develop a city-wide alcohol harm reduction strategy by September 2006.

#### **> Delivery of these Objectives**

Derby Community Safety Partnership’s Drug and Alcohol Action Team – DAAT – is responsible for delivery of the drug objectives, subject to approval of the Partnership’s Board and the DAAT Commissioning Group.

Annual plans for 2005 – 2006 have been completed. These have been developed in partnership with Greater and Central Derby Primary Care Trust, the National Treatment Agency, Government Office East Midlands' Drugs Team, local agencies and local providers. The DAAT has identified lead officers for each objective, who will report on progress every six weeks to the Commissioning Group.

All key agencies are represented on the Commissioning Group, which is chaired by a Director from the Primary Care Trust – PCT.

### ➤ Key Actions 2005 – 2008

The delivery of an effective drug and alcohol strategy in Derby is one of the top priorities for Derby Community Safety Partnership and one which holds significant challenges. It is subject to close scrutiny by the Board and joint performance reviews with the National Treatment Agency, Primary Care Trust and the Partnership's Director.

- We will increase the numbers of people entering treatment services in Derby.
- We will increase GP prescribing and full implementation of models of care.
- We will implement the Drugs Intervention Programme, with the aim of providing fast-track access to treatment for offenders with drug misuse problems, including prolific and priority offenders.
- We will implement Partnership strategies for the reduction in the supply of drugs.
- We will work with partner agencies to draw up a city-wide Alcohol Harm Reduction Strategy.
- We will continue to reduce the waiting time for access to treatment services to a maximum of two weeks.
- We will build on the success of the young people's substance misuse service, linking with the implementation of the Healthy Schools initiative, managed by the education department at the City Council, schools and PCTs.
- We will review pharmacy services and the needle exchange service to ensure full effectiveness.
- We will expand support for parents and carers and involve service users in the design of services.
- We will work within priority neighbourhoods to reduce the availability of drugs, and increase confidence in drug treatment services.

**“We will continue to reduce waiting time for access to drug treatment to a maximum of two weeks.”**



## > Strategic Priority 4

### Prevention and Reduction of Youth Crime

This section outlines the work that will be undertaken to prevent young people from becoming involved in crime, and also to reduce reoffending by young people. It shows that early intervention with young people is effective in preventing offending and reducing youth crime.

#### > Aim

Derby Youth Offending Service – YOS – is committed to the prevention and reduction of offending by young people through interventions that are fair, just and administered in a respectful manner.

#### > Objectives 2005 – 2008

1. Prevention of offending by youth people (Target – reduce the number of first time entrants to Youth Justice System by 5% by March 2008).
2. Reduction of re-offending by young people (Target – reduce re-offending by young offenders by a further 5% by March 2006, compared with 2000 baseline).
3. Support for victims of youth crime (Target – 75% of victims of all youth crime referred to the YOS will be offered the opportunity to participate in a restorative justice process, and that 75% of victims participating are satisfied).

#### > Delivery of these Objectives

Action plans in relation to youth crime are outlined in two key documents; Derby YOS Prevention of Youth Crime Strategy 2005 – 2008, and the Annual Youth Justice Plan.

The YOS Preventions Steering group, chaired by the Head of the YOS, monitors delivery of the preventions agenda. In line with government guidance on Prolific and Other Priority Offenders, the YOS delivers the Prevent and Deter Strategy. Youth Inclusion and Support Panels – YISPs – identify those children and young people assessed to be most at risk of offending. Referrals are then made for participation on YOS Youth Inclusion Programmes – YIPs – and holiday activity programmes. The progress of individual young people is monitored throughout their contact with the YOS projects, and action plans are put in place to make sure that children, young people and their families are fully supported.

Delivery of the Youth Justice Plan is also the responsibility of the Head of YOS, and is delivered primarily through the work of mainstream YOS staff, who come from a range of professional backgrounds. Progress of young offenders is monitored by ASSET returns and tracking of re-offending rates.



**“Early intervention  
with young people  
is an effective  
way of preventing  
offending.”**

The Board and the Director of Derby Safety Community Partnership directly oversee the performance of youth justice services to young offenders, through the performance reporting on Youth Justice Board measures.

Persistent and serious offenders are supervised under the YOS Intensive Supervision and Surveillance Programme, to ensure targeted and effective interventions with those causing most harm. This programme is linked into the city Prolific and Other Priority Offenders scheme.

The Government's vision for the reshaping of children's services is based upon five key outcomes as identified within the Children Act 2004. The Home Office recognise that whilst the Criminal Justice System – CJS – makes a vital contribution to all five of these outcomes, its key focus, however, is on two particular outcomes:

**Making a positive contribution.** A key element of this is encouraging young people to choose to engage in law-abiding and positive behaviour.

**Staying Safe.** Ensuring children and young people are safe from crime, exploitation, bullying, discrimination and violence is one of the main responsibilities of the CJS.

#### ▶ Key Actions 2005 – 2008

- Extend YISPs and YIPs to priority neighbourhoods to ensure effective prevention schemes are in place. We will look for sustainable funding for current YIP programmes. We will also ensure that YIPs target vulnerable groups, such as looked after children, and young people not in school.
- Implement a Race Action Plan (June 2005) to ensure that young people from Derby's black and minority ethnic (BME) population are not disproportionately over represented within the service.
- Develop a safer schools strategy with education and local schools. This will be developed through the extended school and children's centre initiatives.
- Ensure that youth justice interventions are effective in preventing further offending and, in particular, preventing young people from becoming persistent offenders.
- Continue to develop effective support for parents and carers of young offenders.
- Continue to promote contact with victims and the implementation of restorative justice interventions through the Restorative Justice Programme.

**“We will make sure that youth justice interventions are effective in preventing further offending.”**

## Key Priorities are the reduction of:

- *Violent Crime (in particular, city centre violence, domestic violence, robbery and hate crime)*
- *Prolific Offenders*
- *Domestic Burglary*
- *Vehicle Crime*

## > Strategic Priority 5

Reduction of Crime by 20%<sup>2</sup>

### > Aim

To reduce crime in Derby, with a particular focus on those crimes that cause most harm to individuals, families and local communities.

### > Objectives 2005 – 2008

Priority crimes have been identified through the Audit process and in partnership with local police and Government Office East Midlands. Key objectives for the next three years are:

1. Reduction in violent crime by 12%, with particular emphasis on domestic violence, city centre assaults, hate crime, robbery and wounding.
2. Targeted interventions at prolific and other priority offenders in order to prevent and reduce offending by this group.
3. Reduction in domestic burglary by 40%.
4. Reduction in motor vehicle crime by 22%.

### > Delivery of these Objectives

#### ■ Derby Domestic Violence Partnership

The Domestic Violence Partnership is well established and has an annual planning cycle. Action plans for 2005 – 2006 are now complete. These are delivered through the domestic violence strategy group that meets monthly, and a Domestic Violence Forum that meets twice a year. Activity is supported by the Domestic Violence Team in Derby Community Safety Partnership, and there are three domestic violence theme groups working to progress the three strands of the domestic violence strategy, which are:

- providing safe choices and support to those affected by domestic violence
- working with perpetrators of domestic violence to prevent reoffending
- educating young people about domestic violence

### > Key Actions 2005 – 2008

- The implementation of a common monitoring system to ensure full reporting of domestic violence.
- The development and implementation of perpetrators' programmes in the community.
- Consideration of the establishment of a multi-agency domestic violence team.
- Continued development of the court advocacy project.
- Development of effective education and training models.

### ■ Reducing Violence, Robbery and Wounding in the City Centre

The second Local Public Service Agreement – LPSA2 – project is targeted at reducing violent crime and ASB in Derby city centre. A multi-agency project team will be established to support the Project Manager in developing and delivery a three-year project aimed at achieving this target. A key issue for this team is the development of a partnership approach to licensing and responsible drinking, as well as environmental improvements and use of CCTV and surveillance tactics.

### ■ Derby Reduction in Hate Crime Partnership

There are two separate groups in this partnership – the Derby Racial Harassment Partnership and the Derby Lesbian, Gay, Bisexual and Transgender Partnership. Both groups are well supported by the Police and Derby Community Safety Partnership and have agreed key actions for 2005 –2006.

### ■ Derby Prolific and Other Priority Offenders – PPO – Steering Group

A Derby Prolific and Other Priority Offenders steering group has been established. This is supported by an operational group that implements the delivery on the national PPO strategy at a local level. 46 PPOs have been identified, and individual action plans are in place and being delivered by a multi-agency PPO team. Derby Community Safety Partnership will invest in PPO resources over the next three years, with the aim of consolidating the multi-agency team approach

### ■ Burglary, Motor Vehicle and Business Crime

Burglary and motor vehicle crime have well established and successful project management structures in place with lead project officers. Derby Community Safety Partnership will build on the excellent practice established over the past three years, and implement a city-wide programme on reducing burglary, using the core strategies of targeting persistent offenders, target hardening, home crime security advice and links to the Youth Offending Service's prevention programmes.

Motor vehicle crime will continue to focus on the security of on and off street parking areas, target persistent offenders, and provision of advice to vehicle owners.

Derby Community Safety Partnership will continue to support initiatives to reduce crimes against local businesses and is working in partnership with Derbyshire Chamber of Commerce, Derby Chamber of Trade and Derbyshire Constabulary to establish an effective Business Crime Reduction Partnership.

### ■ Derby Community Safety Partnership Tasking and Coordination Meetings

All the above action plans will also be integrated into the DCSP Tasking and Coordination group, chaired by the Head of Crime Reduction, and working closely with the Police National Intelligence Model tasking and coordination process in order to reduce volume crime in Derby. This group will meet on a monthly basis and ensure rapid response to priority problems.

**“ 46 prolific and other priority offenders have been identified and individual action plans are in place.”**



**“ Derby Community Safety Partnership will continue to build on the excellent practice established over the past three years.”**

# Supporting the Strategy

## > Board and Sub Groups

**“The Derby Community Safety Partnership Board meets on a quarterly basis and is responsible for the governance, performance and resourcing of the Partnership.”**

Derby Community Safety Partnership Board meets on a quarterly basis and is responsible for the governance, performance and resourcing of the Partnership. Incorporated into the work of the Board are the governance requirements for Drug and Alcohol Team, Youth Offending Team and Crime and Disorder Reduction Partnership.

The Chief Executive of Derby City Council chairs the Board, which is made up of the following membership:

- Chief Executive, Derby City Council
- Chief Superintendent, Derbyshire Constabulary ‘D’ Division
- Chief Executive, Central & Greater Derby Primary Care Trusts
- Derbyshire Police Authority, Representative
- Asst. Chief Officer, Derbyshire Fire & Rescue Service
- Regional Crime Director, Government Office East Midlands
- Three Community Network Champions
- Chief Executive, Derby Homes
- Chief Executive Officer, Derby Chamber of Trade
- Director of Policy, Derby City Council
- Connexions – Derbyshire, Representative
- Director of Social Services, Derby City Council
- Councillor with Community Safety Portfolio for Derby City Council
- Asst. Director of Education, Derby City Council
- Asst. Chief Officer, National Probation Service, Derbyshire
- Director of Derby Community Safety Partnership

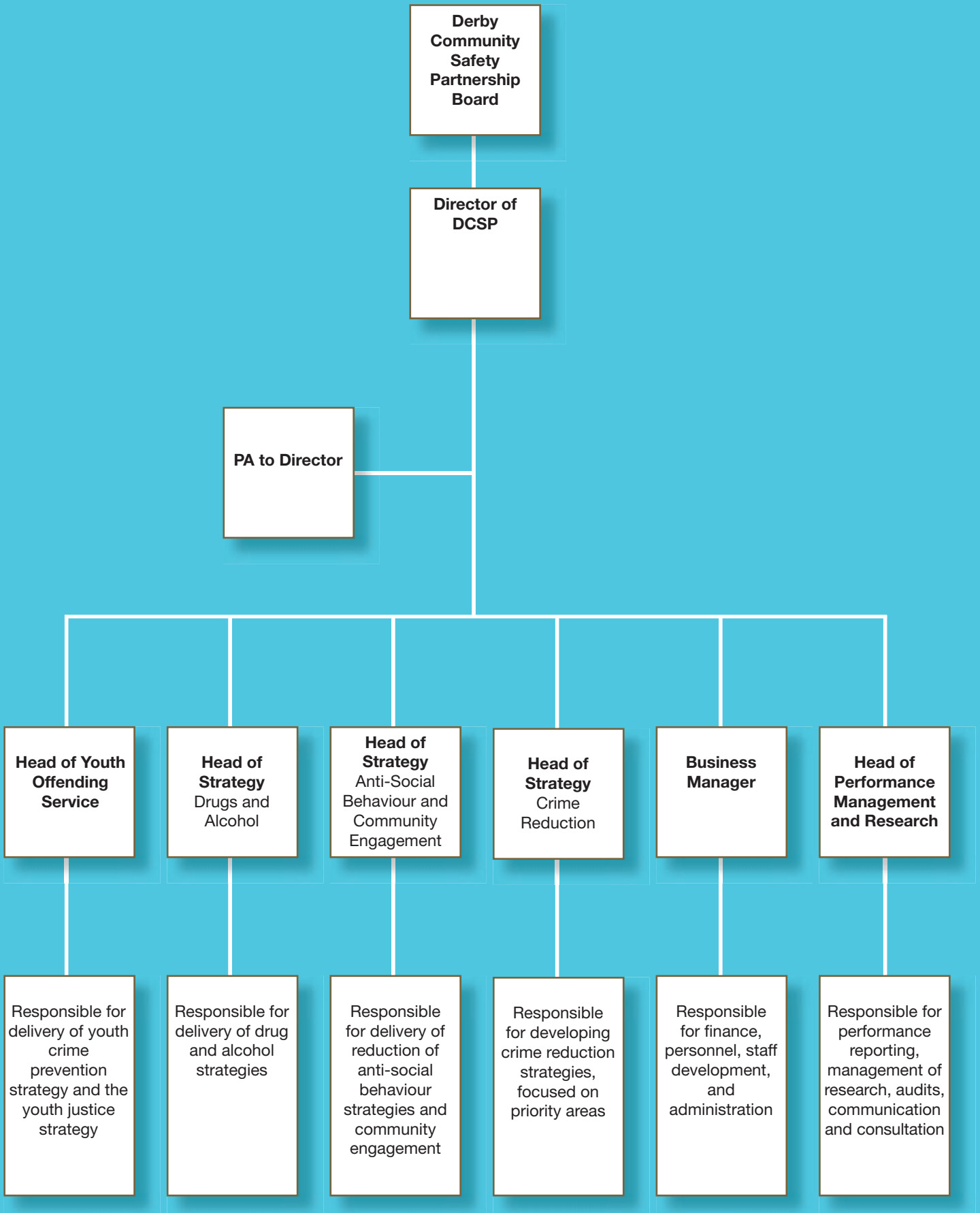
The work of the Board is supported by three subgroups:

- the Drug and Alcohol Team Commissioning Group, chaired by a Director from Central and Greater Derby Primary Care Trust
- the Community Safety Partnership Performance Management Sub Group, chaired by the Chief Superintendent, ‘D’ Division, Derbyshire Police. Derby Community Safety Partnership’s Head of Performance Management and Research prepares regular reports on performance for these meetings
- the Finance and Resource Management Sub Group, chaired by the Chief Executive for Derby City Council. Derby Community Safety Partnership’s Business Manager prepares regular reports for this sub group

The sub groups meet on a quarterly basis and the chairs and officers present quarterly reports on progress and key issues to the Board.

# > Staff

## > Senior Management Team



# Supporting the Strategy

“Derby Community Safety Partnership is proud of the work of all its staff, including sessional workers, mentors and volunteers.”

## ▸ Staff and Resources

Derby Community Safety Partnership is proud of the work carried out by its staff. There are 152 directly managed staff, alongside sessional staff and mentors. Staffs are directly employed by a range of agencies although most – 85% – work for the City Council. Those staff seconded into the Partnership retain active links with employing bodies, and the Partnership currently has staff from:

- Social Services, Derby City Council
- Education, Derby City Council
- Policy Unit, Derby City Council
- Derbyshire Constabulary
- National Probation Service, Derbyshire
- Voluntary Sector
- Greater & Central Derby PCT
- Derby Homes
- Drug Treatment Services, Addaction and Mental Health Trust

## ▸ Staff Development Plan 2005 – 2006

Derby Community Safety Partnership is building on the success of the Youth Offending Service and has applied for Investors in People accreditation in 2005 – 2006.

Derby Community Safety Partnership has identified the following areas as primary learning needs, in order to enable staff to implement the strategy.

Learning Need	Staff Group
Strategic Leadership Skills	DCSP Senior Management Team
Project Management Skills	DCSP Project Officers / Second Tier Management
Equalities Awareness	All staff
Commissioning and Financial Management Skills	Senior Management and key Project Officers
Building Effective Practice - certificate in effective practice (YOS) - certificate in drug awareness - accreditation in community safety	Practitioners in YOS Practitioners in DCSP/other agencies Mentors, volunteers, community champions

## > Commissioning and Performance Management

### > Commissioning

Derby Community Safety Partnership commissions a range of services. Key commissioning arrangements are:

- Provision of Tier 2/3 Adult Drug Treatment Services – Addaction
- Provision of Tier 3/4 Drug Treatment Services – Derbyshire Mental Health Trust
- Provision of support to Parents/Carers of Drug Users – Lauren’s Link, Derby
- Provision of Drug Services for Young People – Addaction and CAMHS
- Provision of Youth Inclusion Programme in Allenton – Enthusiasm Trust
- Provision of Young People’s Substance Misuse Services – Addaction
- Provision of Prescribing Services – Local GPs/PCT
- Provision of Appropriate Adult and Mentoring Services – SOVA

The Partnership also supports a number of small neighbourhood projects.

### > Performance Management

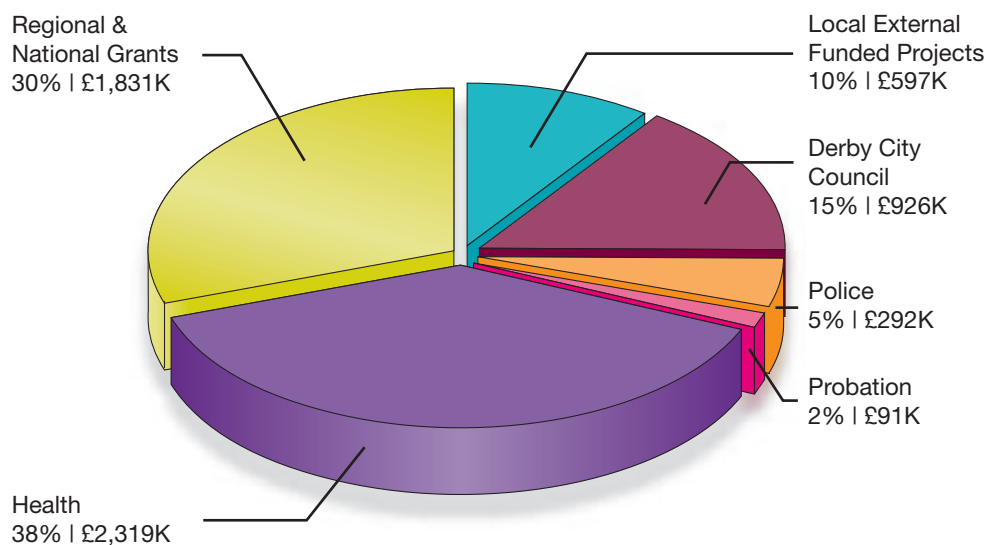
The Head of Performance Management and Research manages a small team of analysts who prepare and deliver quarterly reports on the Partnership’s performance to the Director, as well as the Board and the Performance Sub-Group. We aim to include performance reports on the Partnership’s website from 2005 – 2006.

**“As well as key commissioning arrangements, the Partnership also supports the work of a number of small neighbourhood projects.”**

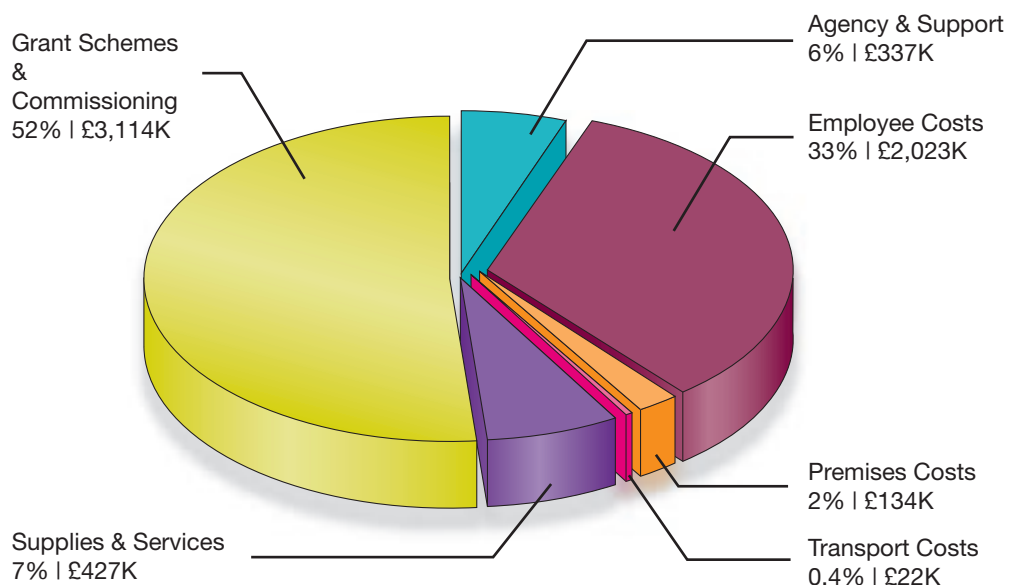
## > Budget 2005 – 2006

Derby Community Safety Partnership's budgets are made up of contributions from a range of local, regional and national partner agencies as outlined below.

### > Income 2005 – 2006 | £6,057,022



### > Expenditure 2005 – 2006 | £6,057,022



Health includes Derbyshire DAAT, NHS & PCT

Regional & National Grants includes YJB, Home Office & GOEM

Local External Funded Projects includes Children's Fund, NDC, NRF, EFU

Supporting the Strategy

“The Partnership's budgets are made up from local, regional and national partner agencies.”

## > Stakeholder Consultation, Marketing and Communications

Derby Community Safety Partnership undertakes a significant amount of stakeholder consultation, often by attending established groups. Key stakeholder consultation activities include:

- annual survey of Derby residents on experiences and perceptions of crime and disorder
- annual survey of young people on experiences and perceptions of crime and disorder
- bi-annual newsletter providing latest information to all households in the city
- input into existing groups: seniors' forum; disabled people's advisory committee
- annual focus groups with vulnerable groups: black and minority ethnic group; women's group; lesbian, gay, bisexual and transgender group
- annual event for residents of Derby
- bi-annual staff event
- internal staff newsletter
- regular meetings with representatives from key partners and agencies
- working with local media – newspapers, radio and television – to ensure extensive coverage of the Partnership's work
- The Community Safety Partnership has its own website – [www.saferderby.org](http://www.saferderby.org) Statistical data and key documents are accessible through the site
- running a series of conferences, seminars and training events throughout the year. For a programme of events please contact the Business Manager on 01332 256941.

### And if you would like to get involved...

There are a number of ways local people can get involved with Derby Community Safety Partnership. These include:

- joining your local neighbourhood safety group, to be established throughout 2005 – 2008
- volunteer to train as a mentor, appropriate adult or Referral Order Panel Member in the Youth Offending Service
- volunteer to help at Lauren's Link.

You will receive regular training and supervision if you take part in any of the above activities. So, if you are interested in supporting Derby Community Safety Partnership's work, please telephone 01332 256160 or email [community.safety@derby.gov.uk](mailto:community.safety@derby.gov.uk)

To find out more about the Partnership's work, or to download our key documents, log on to [www.saferderby.org](http://www.saferderby.org)

# Delivering on Your Behalf

## > Links to other Strategies

In delivering this strategy, Derby Community Safety Partnership is working on behalf of a number of local organisations, in particular:

> <b>Derby City Partnership</b>	delivery of the Community Strategy for Derby
> <b>Derby City Council</b>	fulfilment of its Section 17 Crime and Disorder Act obligation and Corporate Plan objectives
> <b>Derbyshire Police</b>	support for delivery of policing plan targets in reduction of crime and anti-social behaviour
> <b>Derby Primary Care Trust</b>	delivery of the Public Health Strategy and performance targets on drug misuse
> <b>Derby Children's Strategic Partnership</b>	delivery of the preventative strategy for children and young people
> <b>Derbyshire Fire and Rescue Service</b>	delivery of the Derby Prevention Plan
> <b>Derbyshire Connexions Service</b>	delivery of key targets for young offenders
> <b>Derby Local Area Agreement Pilot</b>	co-leadership of Safer and Stronger Communities objectives
> <b>Derby Neighbourhood Renewal Strategy</b>	narrowing the gap between communities
> <b>Derby Community Cohesion Task Group</b>	delivery of community cohesion projects
> <b>Derbyshire Criminal Justice Board</b>	delivery of the Prolific and Other Priority Offender and Domestic Violence Strategies
> <b>Derbyshire Registered Social Landlords</b>	co-ordination of activity to tackle anti-social behaviour
> <b>National Alcohol Harm Reduction Strategy</b>	delivery of city council and police strategies
> <b>Derby City Council Supporting People's Housing Strategy</b>	commissioning role in supporting the strategy

“Derby Community Safety Partnership is working on behalf of a number of local organisations.”



**Please tell us if you need this document in large print, on audio tape, computer disk or in Braille.**

Contact us on 01332 256160  
Fax 01332 258418  
Minicom 01332 256900

Please contact us if you need help reading this document or any part of it translating.

#### HINDI

यदि आपको इस दस्तावेज़ को पढ़ने या इसके किसी भाग का अनुवाद करने के लिए सहायता चाहिए तो हम से सम्पर्क करें। 01332 256924

#### PUNJABI

ਜੇ ਤੁਹਾਨੂੰ ਇਸ ਦਸਤਾਵੇਜ਼ ਪੜ੍ਹਨ ਲਈ ਜਾਂ ਇਸਦੇ ਕਿਸੇ ਭਾਗ ਦੇ ਅਨੁਵਾਦ ਕਰਾਨ ਲਈ ਸਹਾਇਤਾ ਦੀ ਲੋੜ ਹੈ ਤਾਂ ਸਾਡੇ ਨਾਲ ਸੰਪਰਕ ਕਰੋ। 01332 256924

#### URDU

اگر آپ کو اس دستاویز پڑھنے میں مدد یا کسی حصہ کا ترجمہ کرانے کی ضرورت ہو،  
تو ہم سے رابطہ کریں، 01332 256924

ref 2005/DCSP/STRA/01

## Derby Community Safety Partnership

2nd & 3rd Floor St Peter's House

Gower Street

Derby

DE1 1SB

**e-mail:** [community.safety@derby.gov.uk](mailto:community.safety@derby.gov.uk)

**website:** [www.saferderby.org](http://www.saferderby.org)

Derby Community Safety  
Partnership is a member of:

**Derby City Partnership**

